

## CURRICULUM OUTLINE

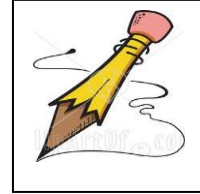
### Salisbury: Year 4 Autumn Term 2017 'Rainforests - Who lives in a place like this?'

#### Topic

The autumn term topic in year 4 is **Rainforests – who lives in a place like this?** in which the class will be learning about rainforests, the animals and the people who live there as well as an understanding of the countries they can be found in.

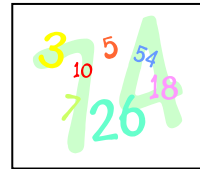
#### Literacy

The term will kick off with the class writing recounts about their summer holidays. Then, we will link our English sessions to our topic; we will be learning the skills and features required for a non-chronological report. The children will produce a general report on the rainforest and include information about an animal which inhabits the rainforest. Following this, the class will look at poetry to describe the rainforest setting. After half term, they will revisit letter writing features to enable the children to write a persuasive letter linked to the environmental effect of deforestation and to conclude, the class will write a piece of narrative using *The Butterfly Lion*, by Michael Morpurgo as a stimulus. Linked to the writing skills, will be the understanding of grammar and punctuation. Morning tasks will focus on practising aspects of sentence structure and handwriting. In addition, targeted spelling groups will take place four times a week.



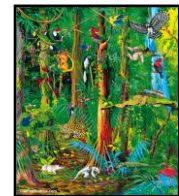
#### Numeracy

During the term, the class will spend time exploring place value which will also weave itself through our focus on mental addition and subtraction skills; use of written methods for addition and subtraction and multiplication and division. Later in the term, we will explore geometry - properties of shape; measurement, fractions and finally statistics and time. Each week the children will practise their times table knowledge and challenge themselves to complete the 'Times Table Challenge' before moving onto the next multiplication focus; we will also practise mental maths knowledge and skills.



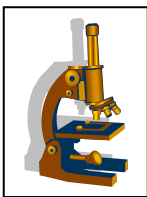
#### Geographical and Historical Understanding

Our topic this term, **Who Lives in a Place Like This?** will focus on animal's habitats, particularly those of the Rainforest. The class will research where Rainforests are found, and will find out about the climate there. We will learn about the different layers of the rainforest and explore the variety of species within each layer. We will also come to understand how creatures are adapted to the environment they live in, and about the food chains and webs.



#### Science

The Science topic for term 1 and 2 is habitats and food chains which will be interweaved with our topic sessions. During the second half term, the class will also be learning about sound. The learning will cover: what is sound; how sound travels; how we hear and how we can protect our ears from extreme sound volume.



#### Information Communication Technology

In the first half term, we will investigate and develop some key skills in using Microsoft Word. This will include working on our typing skills and how to copy and paste. We will then use some of our skills to produce rainforest pictures in the style of Andy Warhol. In the second half term, we will learn about and produce a database linked to the Rainforest topic. E-safety will play a vital part of our learning this term to ensure we are all aware of how to be internet SMART!



## Art / Design Technology

As part of our art we will examine how textiles are used in different cultures, how to colour fabric and add patterns based on a Batik style. Linked to our Rainforest topic, we will be designing and making 3D bugs using papier mâché.



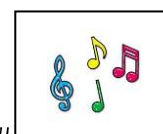
## Physical Education (P.E)



The outdoor P.E focus for the autumn term is invasion games. During the term, the class will learn the features off and skills required to play hockey and tag rugby. The children will also give consideration to tactics in terms of defence and attack. Our indoor theme in term one will be on gymnastics with a focus on balance; in term two the focus is dance where the children will create a rainforest dance. Our P.E days are **Tuesday (outdoor)** and **Friday (indoor)**. Please ensure your child has suitable kit and footwear for these activities.

## Music

In music, we will explore how music can be used to describe different animals. We will listen to the *Carnival of the Animals* and *Peter and the Wolf* before composing our own music to represent a walk through the rainforest. Finally, we will also have the opportunity to make 'rain sticks' and use these percussion instruments to accompany performance poetry.



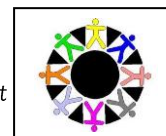
## Religious Education (RE)



Our theme this term is '**It's a Beautiful World**'. We will discuss the Creation story and research the Seven Wonders of the World and explore the concepts of both natural and man-made beauty. We will also be preparing for Christmas by exploring the symbolism linked to the season of advent, the Christmas story through Godly Play and our Key Stage 2 Christmas performance.

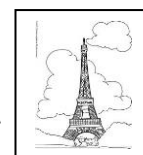
## Personal Social & Health Education (PSHE)

The theme for the first half term will be '**New Beginnings**' during which the class will explore a sense of belonging and how they are valued by identifying positive things about themselves and those in their class; will investigate and try to understand our feelings especially in new situations as well as the feelings of others. In term two, the theme is '**Getting on and Falling Out**'. In these sessions, the class will think about friendship, seeing something from someone else's point of view, working together and being able to manage feelings and looking out for the triggers that make us angry.



## French

In the first half term, the scheme of work is entitled '**L'ecole magique**' in which the children will learn numbers to 31; revise and learn new colours; recognise and use key vocabulary for animals and days of the week and understand and use the description of the animals. In the second half term, the theme is '**Que la fete commence!**' The learning will include learning months of the year; be able to ask what the date is and when their birthday is. In addition, the children will be reading a story and learning vocabulary to understand the story.



## Homework

Homework will be provided to support the maths and literacy lessons in class to ensure consolidation of knowledge plus regular, recorded, reading and times table practice will be included. Although reading homework will be set, we would always encourage children to read for a minimum of 10 minutes per day outside of school, whether independently or to an adult. This can be their school reading book or a text of their choice (newspaper, age-appropriate magazines). In addition, a piece of research may be requested to support the topic theme. Homework will be provided on a weekly basis; handed out on a Thursday and to be returned, completed, on a Tuesday. If you have any queries, please do not hesitate to contact me.

